

Teledyne Leeman Labs has been an innovator in atomic spectroscopy since its founding in 1981. In fact, many concepts introduced by Leeman Labs are today recognized as industry standards. Among these are the first use of an echelle spectrometer for ICP analysis and the first automated mercury stand-alone analyzer.

Today, Leeman Labs is a leading manufacturer of spectroscopic instruments for elemental analysis of metals, alloys, and fluids. Leeman also produces standards and chemical reagents for elemental analysis. Our customer-focused team of dedicated scientists and staff take great pride in the high quality and value of our products and services.

Primary Spectroscopic Techniques Include:

Inductively Coupled Plasma (ICP)

- PMT Based
- Array Detector Based

Mercury Analysis

- Atomic Fluorescence
- Atomic Absorption

Atomic Absorption Spectrometers

Inorganic Standards and Mercury Reagents

TO PLACE AN ORDER:

For your convenience, purchase orders may be placed by:

Telephone: Call Toll Free within the USA:

1-800-LEEMANS (1-800-533-6267) • (603) 886-8400

Facsimile: (603) 886-4322 • Attn: Customer Support

Email: service@teledyne.com

Mail: Teledyne Leeman Labs

6 Wentworth Drive

Hudson, NH 03051

Attn: Customer Support

Please provide the following information when placing an order:

- Your complete shipping and billing address
- Confirm pricing
- Name of a contact person
- Your purchase order number
- Your telephone number
- Date wanted
- Catalog number, description, quantity and number of units
- Requested method of shipment
- Measure for each item being ordered

MAINTENANCE AGREEMENT OVERVIEW

Full Maintenance Agreement — A set-rate comprehensive package that includes all replacement parts, unlimited telephone technical support and on-site service for emergency or preventative maintenance service.

Depot Maintenance Agreement — Includes all replacement parts, unlimited telephone technical support and the option to return the unit to our factory for more complex repairs.

Limited Maintenance Agreement — Includes all replacement parts and unlimited telephone technical support. This agreement is designed for the user who performs their own maintenance.

All service agreements come with a 15% discount on Plasma-Pure standards. For detailed information on Leeman Labs Service Agreements call 1-800-Leemans or visit www.Leemanlabs.com.



TELEDYNE LEEMAN LABS

A Teledyne Technologies Company

6 Wentworth Drive

Hudson, NH 03051 U.S.A.

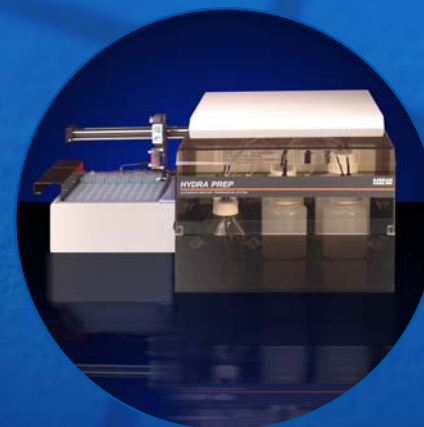
Tel: 603.886.8400

Fax: 603.886.9141

LeemanLabsInfo@Teledyne.com

The Hydra Series from Leeman Labs

HYDRA AA

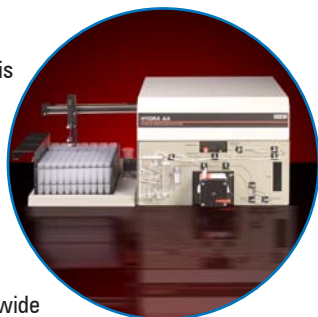


TELEDYNE LEEMAN LABS

A Teledyne Technologies Company

HYDRA AA

The Leeman Labs Hydra AA is a fully automated atomic absorption-based mercury analyzer that provides the ability to measure mercury in concentrations ranging from 1 ppt into the high ppb range. The Hydra AA provides exceptional performance in a wide variety of applications such as water, wastewater, soils, sludge, tissues, blood, and urine.



CONSUMABLES

309-00088-4	Reductant pump tubing (12/pack)
309-00104-2	Sample pump tubing (12/pack)
309-00088-7	Rinse pump tubing (12/pack)
902-00084-1	Drain pump tubing (12/pack)
120-00063	Gas exhaust tubing with fitting
120-00415-1	Reaction tubing assembly including mixing coil
120-00282-1	Reductant bottle tubing from bottle to pump
120-00413-1	Rinse bottle tubing from bottle to pump tubing
120-00284-1	Waste tubing assembly, from drain pump tubing to waste container
902-00083-1	Consumables kit
120-00277-1	Sample tip and tubing assembly, from autosampler to pump tubing

REPLACEMENT PARTS

125-00131-1	Cassette replacement kit (5 cassettes)
307-00093	Single cassette
120-00416-1	G-3 liquid gas separator
120-00281-1	Drying tube/Nafion™ dehydration tubes
317-00048	Frosted mercury lamp
307-00052	Pump head
120-20414-2	Flow thru rinse

SERVICE PARTS

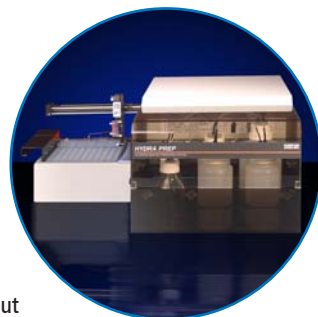
113-00010-1	Pump control PCB
113-00022	Interface PCB
113-00052-1	Encoder driver PCB
113-00061-1	Gas control PCB
113-00062-1	Data ACQ, PCB
113-00068-1	Lamp driver PCB
113-00085-1	Motor driver PCB
113-3010-286	CPU PCB
113-3221-3	Backplane PCB
125-00121-1	Detector PCB kit
227-00008	Power supply

SPARE PART KITS

902-00082-1	Basic spare parts kit
902-00110-1	Extended spare parts kit

HYDRA PREP

The Leeman Labs Hydra Prep performs automated sample digestion for high throughput mercury analysis, freeing the analyst to perform other tasks. This system works not only with Leeman Labs line of mercury analyzers, but with most mercury analysis systems currently manufactured.



CONSUMABLES

309-00092	Gas feed tubing assembly, used on all bottles (1 per unit)
309-00093	Reagent tubing assembly, from bottle to dispenser valve (6 used per unit)
309-00095-1	Gas injection assembly, (from left side of gas dispenser valve to manifold (1 per unit)
309-00096-1	Reagent tubing assembly, (from left side of bottle dispenser valves to manifold (6 per unit)
116-00091-1	Soil prep kit

REPLACEMENT PARTS

122-00121-1	Dispenser valve (7 per unit)
303-00303	Liquid/gas manifold

SERVICE PARTS

113-00021-1	Data ACQ, PCB
113-00022	Interface PCB
113-00064-1	Temp control PCB
113-00066-1	Heater driver PCB
113-00085-1	Motor driver PCB
113-3010-286	CPU PCB
113-3221-3	Backplane PCB
227-00010	Power supply

SPARE PART KITS

902-00081-1	Basic spare parts kit
902-00111-1	Extended spare parts kit

HYDRA AA AND PREP

CUPS, CAPS, AND BOTTLES

116-2102-1	Standard cups, 50mL (100/pack)
116-2111	Standard caps, 50mL (20/pack)
116-00095-1	Sample cups, 15mL (1000/box)
116-2109	Caps for sample cups, 15mL (1000/box)
120-00060	Reductant bottle with cap and fitting
120-00417-1	Rinse bottle, 2L
116-00090-1	Vapor cap, 50mL (10/pack)
116-00092-2	Vapor cap, 15mL (10/pack)
303-00722	Dummy cup, sample
303-00723	Dummy cup, standard
120-00333-1	Bottle cap insert
120-00292-1	2L bottle assembly
120-00293-1	1L bottle assembly
120-00294-1	500mL coated glass acid bottle, cap and straw
120-00334-1	Cap for acid bottle (part of 120-00294-1)
309-00094-1	Straw for acid bottle (part of 120-00294-1)
120-00420-1	44 Position sample rack, metal
120-00421-1	14 Position standard rack, metal
304-1015	Sample tip-guide

CHEMICALS

902-00057-1	Chemical kit for mercury by CVAAS
602-00064	Mercury stock solution
602-00004	Tin chloride solution (in Hydrochloric Acid)
602-00005	Tin chloride solution (in Sulfuric Acid)
602-00003	Nitric acid (Hg grade)
602-00006	Sulfuric acid (Hg grade)
602-00087	Potassium permanganate solution, 1L
602-00089	Potassium persulfate solution, 2L
602-00088	Sodium chloride/hydroxylamine sulfate solution, 2L
605-0009	Water, ASTM type 1, 2L